

# PARKS

OUTDOOR LIVING



BY *John Thomas* FURNITURE®



# PARKS

OUTDOOR LIVING

BY *John Thomas* FURNITURE®

As beautiful as it is durable, the PARKS: Outdoor Living Collection by John Thomas Furniture is meant to last for years and years. Made of the finest materials for outdoor living, the collection sets the mood for fully enjoying the moment—outdoors!

Fashioned, and named in homage to the US' most beautiful trademark parks, the collection boasts modern, clean lines, as well as incorporating the most practical materials meant to withstand the elements.

*Experience - Live - Feel - the out-of-doors in a new way with PARKS Outdoor Living by John Thomas Furniture.*



## Biscayne



**Biscayne Dining Chair**  
ODC-400  
24"W x 22"D x 33"H  
Aluminum Frame, Weather Resistant Wicker, Olefin Fabric with Quick Dry Foam



**Biscayne Bucket Chair**  
ODC-431  
24"W x 27"D x 34"H  
Aluminum Frame, Weather Resistant Wicker, 100% FSC Teak Legs, Olefin Fabric with Quick Dry Foam



**Biscayne Dining Table**  
ODT-448R  
48"D x 30"H  
Aluminum Frame, Weather Resistant Wicker, Parasole Hole (no cap)



**Biscayne Stool Set (Sold as Set Of 2)**  
ODS-442  
16"W x 16"D x 19"H  
Aluminum Frame, Weather Resistant Wicker, Olefin Fabric with Quick Dry Foam



**Biscayne Lounge Chair with Footstool**  
ODC-421C  
36"W x 26"D x 37"H  
21"W x 26"D x 19"H  
Aluminum Frame, Weather Resistant Wicker, Olefin Fabric with Quick Dry Foam



**Biscayne 5-Pcs Dining Set (includes table and 4 stools)**  
ODT-455  
34"W x 60"L x 30"H  
Aluminum Frame, Weather Resistant Wicker, Olefin Fabric with Quick Dry Foam



**Biscayne 3-Seater Sofa with Coffee Table**  
ODC-463  
33"W x 78"L x 33"H  
24"W x 43.75"L x 18"H  
Aluminum Frame, Weather Resistant Wicker, Olefin Fabric with Reticulated Foam, and a Custom Fit Cover



**Biscayne Side Chair**  
ODC-461  
30"W x 33"D x 33.5"H  
Aluminum Frame, Weather Resistant Wicker, Olefin Fabric with Reticulated Foam, and a Custom Fit Cover



**Biscayne Swivel Chair**  
ODC-461SW  
30"W x 33"D x 33.5"H  
Aluminum Frame, Weather Resistant Wicker, Olefin Fabric with Reticulated Foam, and a Custom Fit Cover



**Biscayne End Table (Includes metal ice bucket)**  
ODOT-460RE  
18.25" D x 23.5"H  
Aluminum Frame, Weather Resistant Wicker, Metal Ice Bucket, and a Custom Fit Cover

## Shenandoah



**Shenandoah Dining Chair**  
ODC-300  
26"W x 25"D x 35"H  
Aluminum Frame, Woven Abaca Rope, 100% FSC Natural Teak Base, Olefin Fabric with Quick Dry Foam, and a Custom Fit Cover



**Shenandoah White Round Tabletop & Teak Leg Base**  
ODT-351RT/ODT-351RB  
51"D x 30"H  
White Polystone Top, 100% FSC Teak Legs, and a Custom Fit Cover



**Shenandoah Gray Round Tabletop & Teak Leg Base**  
ODT-351RT-G/ODT-351RB  
51"D x 30"H  
Gray Polystone Top, 100% FSC Teak Legs, and a Custom Fit Cover



**Shenandoah White Rect. Tabletop & Teak Leg Base**  
ODT-38037/ODT-38037B  
37.5"W x 80"L x 30"H  
White Polystone Top, 100% FSC Teak Legs, and a Custom Fit Cover



**Shenandoah Gray Rect. Tabletop & Teak Leg Base**  
ODT-38037-G/ODT-38037B  
37.5"W x 80"L x 30"H  
Gray Polystone Top, 100% FSC Teak Legs, and a Custom Fit Cover



## Cape May

---



**Cape May Folding Adirondack**  
ODC-523B  
29.25"W x 36"D x 41"H  
Crafted in Tangent Sustainable Lumber, Made in the USA, Finished in Weathered Wood and White



**Cape May Arm Chair**  
ODC-525AB  
28.25"W x 32.5"D x 46"H  
Crafted in Tangent Sustainable Lumber, Made in the USA, Finished in Weathered Wood and White



**Cape May Counter Stool**  
ODS-526AB  
28.75"W x 38"D x 52"H  
Crafted in Tangent Sustainable Lumber, Made in the USA, Finished in Weathered Wood and White



**Cape May Saddle Swivel Stool**  
ODS-441SB  
20"W x 14.5"D x 23.75"H  
Crafted in Tangent Sustainable Lumber, Made in the USA, Finished in Weathered Wood



**Cape May Setee Table**  
ODT-406  
22"W x 1.75"H  
Crafted in Tangent Sustainable Lumber, Made in the USA, Finished in White



**Cape May Tabletop with Cape May Dining Base**  
ODT-450T/ODT-450B-30  
38"W x 38"D x 30"H  
Crafted in Tangent Sustainable Lumber, Made in the USA, Finished in Weathered Wood and White with a Parasole Hole and cap



**Cape May Tabletop with Cape May Counter Base**  
ODT-450T/ODT-451B-36  
38"W x 38"D x 36"H  
Crafted in Tangent Sustainable Lumber, Made in the USA, Finished in Weathered Wood and White with a Parasole Hole and cap

## Acacia

---



**Acacia Counter Table**  
ODT-250  
16"W x 48"L x 36"H  
Acacia Frame (RTA) and an Acacia Plant Style Top



**Acacia Backless Stool**  
(Sold as set of 2)  
ODS-251  
15.75"W x 15.75"D x 24"H  
Acacia Frame (RTA) and a Woven Seat



**Acacia Counter Stool**  
(Sold as set of 2)  
ODS-252  
15.9"W x 19"D x 36"H  
Acacia Frame (RTA) and a Woven Back and Seat

## Olympic

---



**Olympic Swivel Rocker Chair**  
ODC-201SW  
31"W x 29"D x 28"H  
Black Aluminum Frame, Woven Abaca Rope, Olefin Fabric with Quick Dry Foam, and a Custom Fit Cover



**Olympic 3-Seater Sofa**  
ODC-203  
31"W x 74"L x 28"H  
Black Aluminum Frame, Woven Abaca Rope, Olefin Fabric with Quick Dry Foam, and a Custom Fit Cover

## Sequoia

---



**Sequoia Round Coffee Table**  
ODOT-12RC  
38"D x 16"H  
Black Aluminum Frame, and a Custom Fit Cover



**Sequoia Round End Table**  
ODOT-12RE  
22"D x 20"H  
Black Aluminum Frame, and a Custom Fit Cover

## ***Biscayne National Park***

Stretching over 270 square miles southeast of Miami to the Florida Keys ( and with 95% of it underwater) Biscayne National Park is the largest marine sanctuary in the National Park Service. Proudly protecting rare and exquisite collections of aquamarine water, emerald islands, and fish-bejeweled coral reefs.





**Biscayne Dining Chair**  
ODC-400  
24"W x 22"D x 33"H  
Aluminum Frame, Weather  
Resistant Wicker, Olefin Fabric  
with Quick Dry Foam



**Biscayne Dining Table**  
ODT-448R  
48"D x 30"H  
Aluminum Frame, Weather  
Resistant Wicker, Parasole  
Hole (no cap)



**Biscayne Stool Set**  
(Sold as Set Of 2)  
ODS-442  
16"W x 16"D x 19"H  
Aluminum Frame, Weather  
Resistant Wicker, Olefin  
Fabric with Quick Dry Foam





**Biscayne Dining Table**  
 ODT-448R  
 48"D x 30"H  
 Aluminum Frame, Weather Resistant  
 Wicker, Parasole Hole (no cap)



**Biscayne 5-Pcs Dining Set**  
 (includes table and 4 stools)  
 ODT-455  
 34"W x 60"L x 30"H  
 Aluminum Frame, Weather  
 Resistant Wicker, Olefin Fabric  
 with Quick Dry Foam



**Biscayne Bucket Chair**  
 ODC-431  
 24"W x 27"D x 34"H  
 Aluminum Frame, Weather Resistant  
 Wicker, 100% FSC Teak Legs, Olefin  
 Fabric with Quick Dry Foam



**Biscayne 3-Seater Sofa with  
Coffee Table**

ODC-463  
33"W x 78"L x 33"H  
24"W x 43.75"L x 18"H  
Aluminum Frame, Weather  
Resistant Wicker, Olefin  
Fabric with Reticulated  
Foam, Custom Fit Cover, and  
Removable Coffee Table Top  
for Easy Storage



**Biscayne Side Chair**  
ODC-461

30"W x 33"D x 33.5"H  
Aluminum Frame, Weather  
Resistant Wicker, Olefin  
Fabric with Reticulated  
Foam, and a Custom Fit Cover



**Biscayne End Table**  
(Includes metal ice bucket)  
ODOT-460RE  
18.25" D x 23.5"H  
Aluminum Frame, Weather  
Resistant Wicker, Metal Ice  
Bucket , and a Custom Fit Cover



**Biscayne Swivel Chair**  
ODC-461SW  
30"W x 33"D x 33.5"H  
Aluminum Frame, Weather  
Resistant Wicker, Olefin Fabric  
with Reticulated Foam, and a  
Custom Fit Cover



**Biscayne Lounge Chair with Footstool**  
ODC-421C  
36"W x 26"D X 37"H  
21"W x 26"D x 19"H  
Aluminum Frame, Weather Resistant Wicker,  
Olefin Fabric with Quick Dry Foam



## SPECIFICATIONS

### ***Aluminum Frames***

Welded  
Rust Proof  
Powder Coated  
Scratch Resistant  
Four Year Warranty

### ***Cushions***

Water Repellant  
2.0 Density (quick dry) Foam  
Mesh Bottoms To Release Moisture  
One Year Warranty

### ***Fabrics***

Quick Drying Olefin  
Resist Water & Fading From UV Rays

### ***Wood***

100% Natural FSC Teak







## ***Shenandoah***

Just 75 miles from Washington DC, Shenandoah National Park features cascading waterfalls, vast vistas, fields of wildflowers, and quiet wooded hollows. With over 200,000 acres of protected lands that act as home to deer, songbirds, and black bear – Shenandoah Park was considered the American frontier before the rest of the continent was explored.



**Shenandoah Dining Chair**  
ODC-300  
26"W x 25"D x 35"H  
Aluminum Frame, Woven Abaca Rope, 100% FSC Natural Teak Base, Olefin Fabric with Quick Dry Foam, and a Custom Fit Cover



POLYSTONE TABLE TOP  
AVAILABLE IN:  
  
WHITE    GRAY

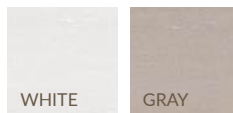
**Shenandoah White Round Tabletop  
& Teak Leg Base**  
ODT-351RT/ODT-351RB  
51"D x 30"H  
White Polystone Top, 100% FSC Teak Legs, and a Custom Fit Cover





**Shenandoah Gray Round Tabletop & Teak Leg Base**  
ODT-351RT-G/ODT-351RB  
51"D x 30"H  
Gray Polystone Top, 100% FSC Teak Legs, and a Custom Fit Cover

POLYSTONE TABLE TOP  
AVAILABLE IN:



**Biscayne Bucket Chair**  
ODC-431  
24"W x 27"D x 34"H  
Aluminum Frame, Weather Resistant Wicker, 100% FSC Teak Legs, Olefin Fabric with Quick Dry Foam





**Shenandoah Gray Rect. Tabletop & Teak Leg Base**  
ODT-38037-G/ODT-38037B  
37.5"W x 80"L x 30"H  
Gray Polystone Top, 100% FSC Teak Legs, and a Custom Fit Cover

**Shenandoah Dining Chair**  
ODC-300  
26"W x 25"D x 35"H  
Aluminum Frame, Woven Abaca Rope, 100% FSC Natural Teak Base, Olefin Fabric with Quick Dry Foam, and a Custom Fit Cover



**Shenandoah White Rect. Tabletop & Teak Leg Base**  
ODT-38037/ODT-38037B  
37.5"W x 80"L x 30"H  
White Polystone Top, 100% FSC Teak Legs, and a Custom Fit Cover

**Biscayne Bucket Chair**  
ODC-431  
24"W x 27"D x 34"H  
Aluminum Frame, Weather Resistant Wicker, 100% FSC Teak Legs, Olefin Fabric with Quick Dry Foam

POLYSTONE TABLE TOP AVAILABLE IN:





**Cape May Folding Adirondack**  
 ODC-523B  
 29.25"W x 36"D x 41"H  
 Crafted in Tangent Sustainable Lumber, Made in the USA, Finished in Weathered Wood and White



**Cape May Setee Table**  
 ODT-406  
 22"W x 1.75"H  
 Crafted in Tangent Sustainable Lumber, Made in the USA, Finished in White



**Cape May Counter Stool**  
 ODS-526AB  
 28.75"W x 38"D x 52"H  
 Crafted in Tangent Sustainable Lumber, Made in the USA, Finished in Weathered Wood and White



**Cape May Tabletop with Cape May Counter Base**  
 ODT-450T/ODT-451B-36  
 38"W x 38"D x 36"H  
 Crafted in Tangent Sustainable Lumber, Made in the USA, Finished in Weathered Wood and White with a Parasole Hole and cap





## ***Cape May***

Surfs Up! The Cape May series offers a relaxed coastal design that feels right at home by the water. Offering a two-tone finish of Weathered Wood and White that complements both modern and traditional outdoor spaces.

Crafted from Tangent (a post-consumer and post-industrial recycled material) these pieces never need to be painted, stained, or sealed as they are impervious to moisture and insects while not allowing rot, splintering, corrosion, or decay.

Cape May is a sustainable choice, as Tangent does not emit toxins and irritants into the air or water like PVC or treated wood. Featuring UV stabilizers, colorant, and strengtheners that ensure consistent color and texture. Simply clean with soap and water when needed.

**Customized color options available. See Sales Rep for more info.**





**Cape May Tabletop with Cape May Dining Base**  
ODT-450T/ODT-450B-30 38"W x 38"D x 30"H  
Crafted in Tangent Sustainable Lumber, Made in the USA, Finished in Weathered Wood and White with a Parasole Hole and cap



**Cape May Arm Chair**  
ODC-525AB  
28.25"W x 32.5"D x 46"H  
Crafted in Tangent Sustainable Lumber, Made in the USA, Finished in Weathered Wood and White



**Cape May Tabletop with Cape May Counter Base**  
ODT-450T/ODT-451B-36  
38"W x 38"D x 36"H  
Crafted in Tangent Sustainable Lumber, Made in the USA, Finished in Weathered Wood and White with a Parasole Hole and cap



**Cape May Saddle Swivel Stool**  
ODS-441SB  
20"W x 14.5"D x 23.75"H  
Crafted in Tangent Sustainable Lumber, Made in the USA, Finished in Weathered Wood







**Acacia Counter Table**  
ODT-250  
16"W x 48"L x 36"H  
Acacia Frame (RTA) and an  
Acacia Plant Style Top



**Acacia Backless Stool**  
(Sold as set of 2)  
ODS-251  
15.75"W x 15.75"D x 24"H  
Acacia Frame (RTA) and a  
Woven Seat



**Acacia Counter Stool**  
(Sold as set of 2)  
ODS-252  
15.9"W x 19"D x 36"H  
Acacia Frame (RTA) and a Woven  
Back and Seat





**Olympic Swivel Rocker Chair**  
 ODC-201SW  
 31"W x 29"D X 28"H  
 Black Aluminum Frame, Woven Abaca Rope, Olefin Fabric with Quick Dry Foam, and a Custom Fit Cover



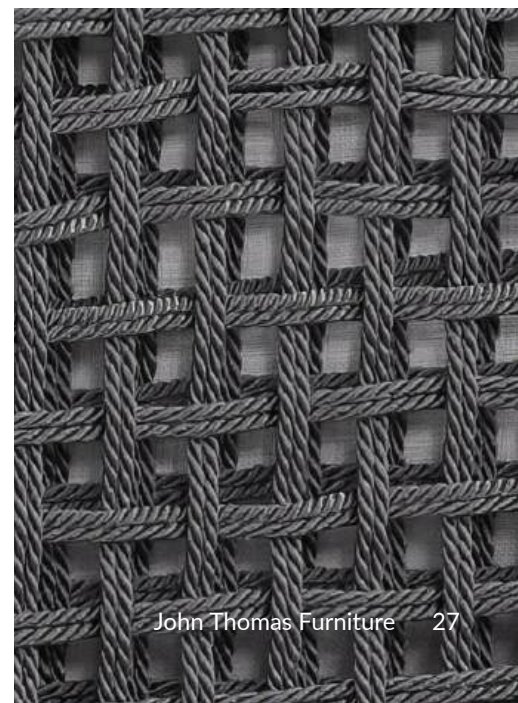
**Olympic 3-Seater Sofa**  
 ODC-203  
 31"W x 74"L x 28"H  
 Black Aluminum Frame, Woven Abaca Rope, Olefin Fabric with Quick Dry Foam, and a Custom Fit Cover



**Sequoia Round Coffee Table**  
ODOT-12RC  
38"D x 16"H  
Black Aluminum Frame, and  
a Custom Fit Cover



**Sequoia Round End Table**  
ODOT-12RE  
22"D x 20"H  
Black Aluminum Frame, and  
a Custom Fit Cover





John Thomas Furniture Brand is a Division of Whitewood Industries  
100 Liberty Drive, Thomasville, NC 27360 p 336.472.0303 f 888.636.6521 [www.johnthomasfurniture.com](http://www.johnthomasfurniture.com)  
ASBMAY2026