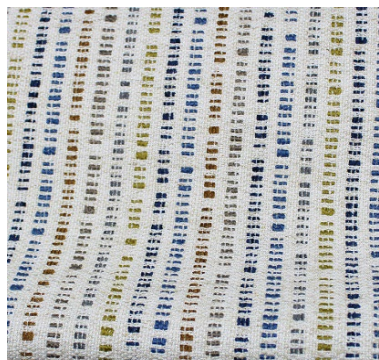


Pattern Detail and Specifications

CODDLE



Color:	Galaxy
	47% Rayon
	37% Polyester 16%
Fiber Content:	Linen
Fabric Repeat:	9.45" X 13.39"
Fabric Width:	54"
Fabric Backing:	Backed
Fabric Grade:	H
Fabric Direction:	RR
Country of Origin:	China

FLAMMABILITY:

CALIFORNIA TECH	PASS
TB117-2013 :	
UFAC:	CLASS 1

PERFORMANCE:

Abrasion:	Average Min. 15000 Cycles
Light Fastness:	Min. 40 Hours - Min. Class 3
Color Fastness to Crocking	
Wet:	Min Class 4.0
Dry:	Min Class 3.0

CARE & CLEANING

Cleaning Code:	W
-----------------------	---

"Spot clean only with water based shampoo or foam upholstery cleaner. Pretest a small, inconspicuous area before proceeding. Do not overwet. Do not use solvents to spot clean. Pile fabrics may require brushing with a non-metallic, stiff bristle brush to restore appearance. Hot water extraction or steam cleaning is not a recommended cleaning method. Cushion covers should not be removed and laundered. To prevent overall soiling, frequent vacuuming or light brushing with a non metallic, stiff bristle brush to remove dust and grime is recommended. When cleaning a spill, blot immediately to remove spilled material. Clean spots or stains from the outside to the middle of the affected area to prevent circling. Use a professional furniture cleaning service when an overall soiled condition has been reached."

CULP
UPHOLSTERY
F A B R I C S

1823 Eastchester Drive, High Point, NC 27265, USA

www.Culp.com